

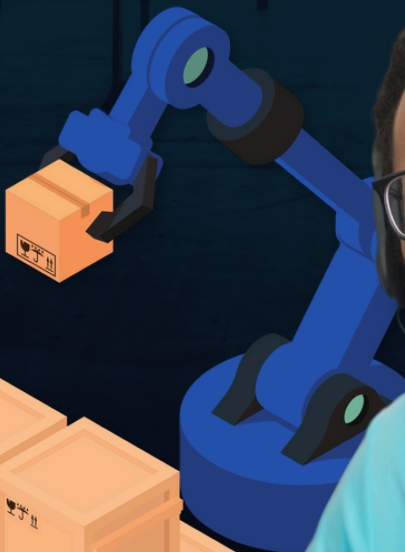


RED  ARROW
TECHNOLOGIES, LLC



SPECIALIZED IT FOR **MODERN** MANUFACTURING:

Shifting From **Reactive** to **Proactive**



www.redarrowtech.com

21st Century Manufacturing

In an era where manufacturing **intersects** with advanced technology, your business faces numerous challenges that can **hinder your progress and efficiency**.

That's why we're here to help!

In this E-Book, we will:

- Explore the **pivotal role** IT plays in modern manufacturing
- Address **common hurdles** that you have encountered in your own operations
- Emphasize the importance of embracing IT as a **support tool** and **enabler of enhanced productivity and security**.



Understanding Your IT Needs

Holding on to outdated technology is like keeping your trusty old flip phone—it's familiar, **but you know you're missing out on some cool features.**

Just like upgrading to a modern smartphone opens up a world of apps and capabilities, updating your manufacturing firm's IT infrastructure can similarly **transform your operations!**

That's why understanding your specific IT needs isn't just helpful - **it's crucial.** And just as importantly, your IT Provider needs to **align with these needs** to offer the most effective solutions.

You shouldn't have to settle for **inefficient email ticketing systems** or a **lack of consistency** in your support; these issues **slow down your operations** and **cost your business real dollars!**





The Power Of Customized IT



We get it - **your manufacturing setup is one-of-a-kind**. That's what **sets us apart!**

Our understanding of what makes your industry unique gives you a strategic edge by **zeroing in on your specific challenges and needs**.

Unlike cookie-cutter fixes, which often fail to meet specific needs or optimize your processes, customized IT services are sculpted around **tangible business goals**. This personalized touch means your entire tech setup works **seamlessly** to boost your efficiency; this enhances your **day-to-day operations** and **prevents future disruptions!**









Minimizing Downtime



Here's a not-so-fun fact: a single hour of downtime can cost your business as much as **\$260,000!**

What's worse, that number is only considering **direct costs from lost production time:** the impact goes deeper when factoring in **indirect costs** like damage to your brand reputation and potential loss of future business...

The right IT can help you minimize downtime through:

-  **Predictive Maintenance:** Closely monitoring your network and utilizing AI-driven analytics to predict and prevent equipment failures **before they occur.**
-  **Real-Time Monitoring:** Using advanced monitoring systems to oversee production processes **24/7**, allowing for immediate troubleshooting and response!
-  **Streamlined Support:** Enhanced IT support frameworks to ensure faster response times and efficient problem resolution, **minimizing the impact of any downtime.**
-  **Automated Backups:** Establishing automated backup systems and failover mechanisms to ensure **data integrity** and **quick recovery** in the event of a complete system failure.



Data Security In Manufacturing

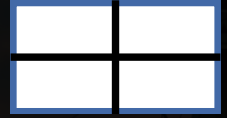
Data breaches are more than just a nuisance - **they're a significant threat**. A breach could lead to **operational disruptions, compliance violations, and hefty ransom payments!** Beyond the **immediate financial hit** from fines and fixing the issues, breaches also lead to **lost trust** with your clients and partners, **negatively impacting your reputation**.

Implementing **robust security measures** and sticking to **strict compliance protocols** is another key area that the **right IT provider** can provide your business. What better way to fortify your data than making your operations resilient enough to **fend off cyber threats** and **bounce back quickly** if they strike?





Scaling Your Operations



As your manufacturing business grows, the importance of **scalable IT solutions** cannot be overstated. **Why?** Because scalable, adaptable IT ensures that your infrastructure can handle increased demand and integrate new technologies **without sacrificing performance or security.**

This is especially important when wanting to **break into new markets:** after all, you want to be able to grow and stay competitive without your technology **holding you back!**

Planning for scalability means thinking about what you need **now** and what you'll need **down the road.** However, we understand that the nature of your industry makes it difficult to prioritize this planning: **good thing our team can do this for you!**






Time For An Upgrade!




Partnering with an IT Provider that **specializes in manufacturing** can be a transformative step towards future-proofing your business.

If you're ready to see how we can help, reach out to our team below for a **free, personalized consultation!** We're excited to help you **position your business for long-term success.**

RED ARROW
TECHNOLOGIES, LLC

 (732) 813-3939

 info@redarrowtech.com

 redarrowtech.com



www.redarrowtech.com